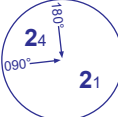
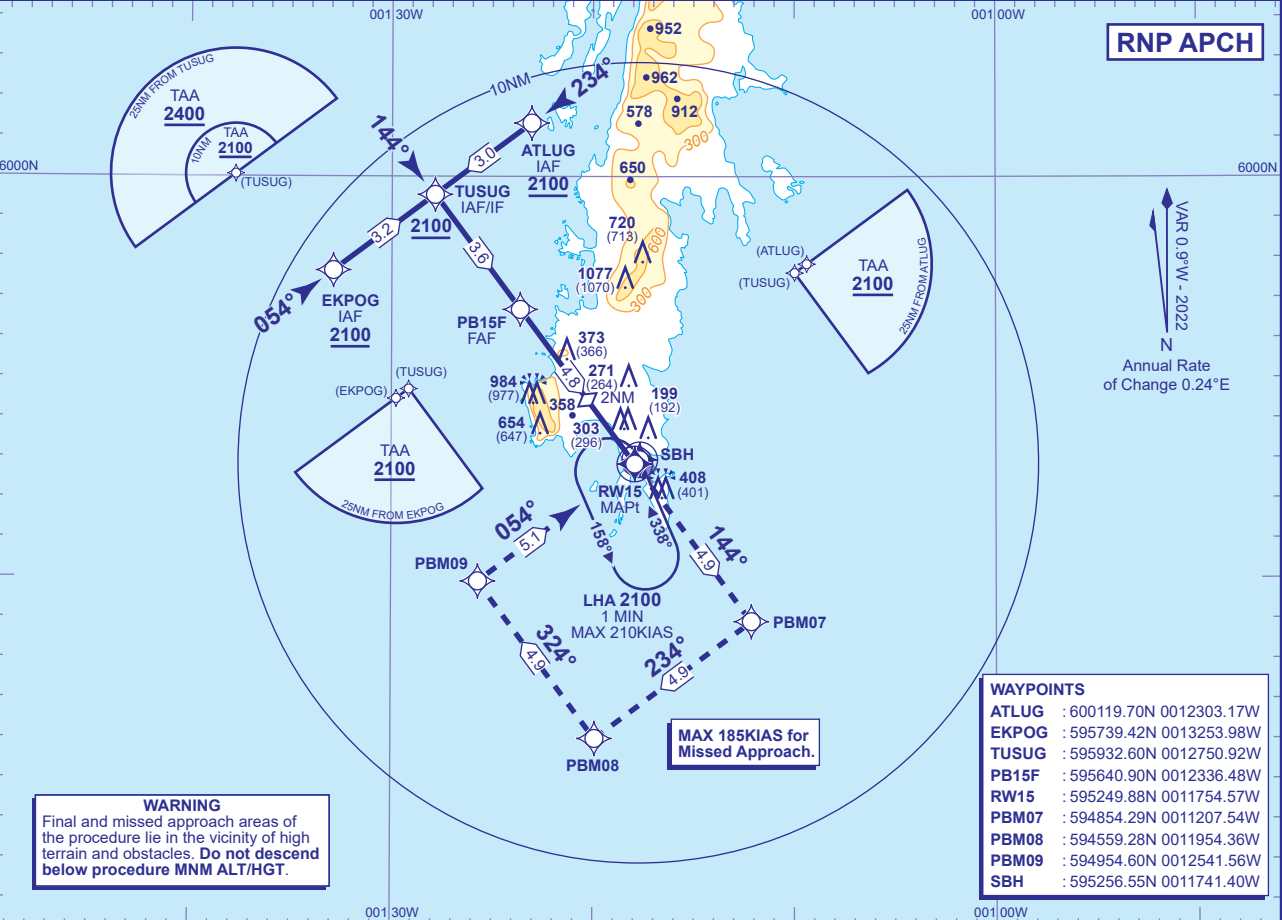


INSTRUMENT APPROACH CHART - ICAO

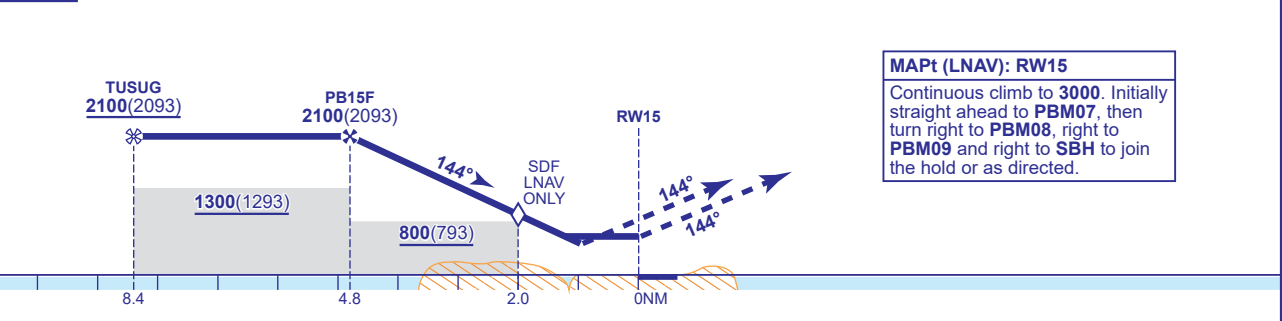
SUMBURGH  
RNP  
RWY 15  
(ACFT CAT A,B,C)

 MSA 25NM ARP	TWR	118.255	SUMBURGH TOWER	AD ELEVATION	21
	RAD	131.300, 123.155	SUMBURGH RADAR	THR ELEVATION	7
	ATIS	125.855	SUMBURGH INFORMATION	OBSTACLE ELEVATION	1077 AMSL (1070) (ABOVE THR)
	AFIS	118.255	SUMBURGH INFORMATION	BEARINGS ARE MAGNETIC	TRANSITION ALTITUDE 6000



RECOMMENDED PROFILE Gradient 6.99%, 425FT /NM				
NM to RW15	4	3	2 (SDF)	1
ALT(HGT)	1760(1753)	1330(1323)	910(903)	480(473)

TCH 50



Aircraft Category		A	B	C	Rate of descent	G/S KT	160	140	120	100	80
OCA (OCH)	LNAV	560(553)	560(553)	610(603)		FT/MIN	850	740	640	530	420
VM(C)OCA (OCH AAL)	Total Area	800(779)	1200(1179)	1400(1379)							
	Restricted (See Note 1)	800(779)	800(779)	1130(1109)							

NOTE 1 Reduced VM(C) minima applies to aircraft which manoeuvre outside the quadrant north of RWY 09/27 C/L and west of RWY 15/33 C/L.

CHANGE (12/21): EGNOS AND LPV REMOVED.